



**Mail To:** Padre Dam MWD  
Attention: Appeals  
PO Box 719003  
Santee CA 92072

**Email To:** [customer@padre.org](mailto:customer@padre.org)  
**Office Hours:**  
Mon-Thurs: 9:00am – 4:30pm  
Fri: 8:00am – 12:00pm

### How to Find Your Water Meter

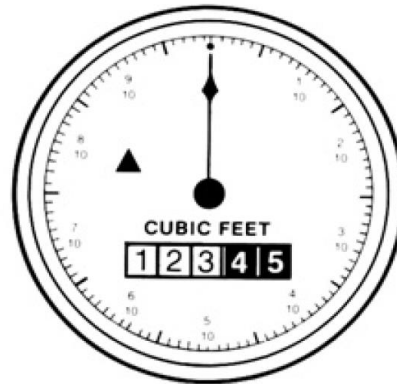
Your water meter is inside a rectangular concrete box, flush with the ground, and is usually located near the roadway or sidewalk. This is Southern California so watch for spiders, snakes and other critters when opening the meter box.

### How to Read Your Water Meter

Your water meter records the amount of water you use, just like the odometer on your car records the number of miles you drive. Your meter is never reset. Your water use is measured in cubic feet and is billed in units of hundred cubic feet.



Digital Meter



Analog Meter

### How to Detect Leaks

To test for leaks in your plumbing system, stop all indoor and outdoor water use activity. Check and read the numbers on the meter face.

For digital meters, look at the last three digits on the meter, if these numbers are advancing and/or the plus (+) sign is blinking, water is leaking somewhere in your plumbing system.

For analog meters, note the position of the sweep hand on the water meter. Wait thirty minutes then recheck your water meter. If the sweep hand has moved, the numbers have changed, or the small triangle on the face is rotating, water is leaking somewhere in your plumbing system.

### Use AquaHawk to Monitor Usage/Set Thresholds for Alerts

Go to [www.padredam.org/MyWaterUse](http://www.padredam.org/MyWaterUse) and register for AquaHawk, our online water use tool for customers. AquaHawk can show you your water use, down to the hour; however the system can only provide prior days' usage (the system is not live). Make sure to set your thresholds so you can receive alerts for a higher than normal bill or continuous water flow.

### If a Leak Has Been Detected

If a leak has been detected, turn off the house valve to isolate if the leak is before or after the house valve. The valve is usually located at a hose bib on an outside wall in a direct line from the water meter. If the water meter dial still moves, you should investigate a potential leak between the meter and the house. If the meter movement stops, investigate for a potential leak after your house valve.

### Irrigation Leaks

Leaks in your irrigation system won't always show on your meter as continuous flow. To find irrigation leaks, walk your irrigation lines and check the irrigation valves in ground. Check for wet spots, leaky or broken sprinkler heads, and use your meter readings or AquaHawk to measure total irrigation use.

### Got a Leak?

If you have a leak, you will need to contact a plumber or make the repairs yourself. Padre Dam does not provide leak repair services for water pipes on the customer's side of the water meter.